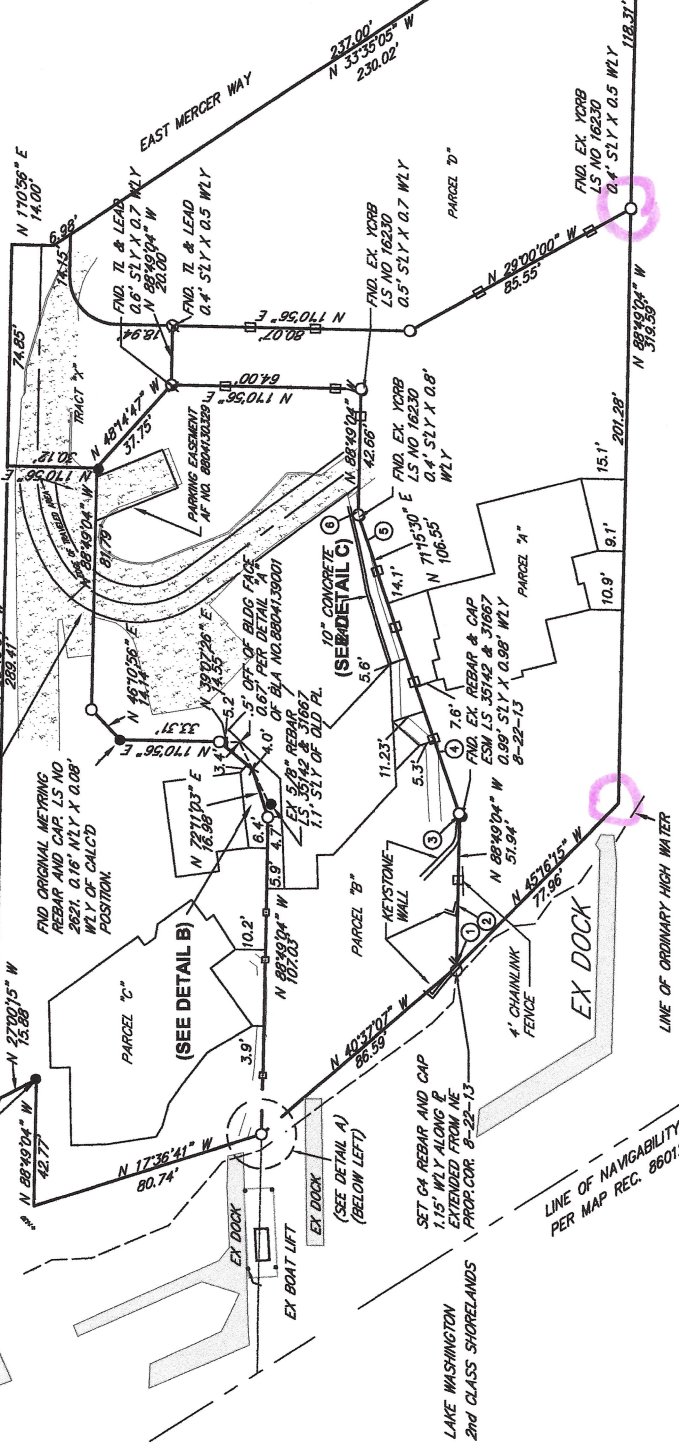


EX. 1043

2017 HORIZONTAL RUNI

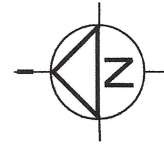
12' ACCESS EASEMENT PER SURVEY REC. AF NO. B700090005 CALLED OUT IN EASEMENT AND MAINTENANCE AGREEMENT REC UNDER NO. 8801291110.

FIND EX REBAR AND CAP LS NO. 20784. 0.26" N2LY X 0.18" ELY. CAP LS NO. 20784. 0.25" SLY X 0.18" ELY.



- ① KEYSTONE WALL IS SITUATED OVER NWLY PROP. COR.
- ② KEYSTONE WALL CROSSES NWLY & 20.9" ELY OF PROP. COR. SETLY COR IS 0.2'S OFF &
- ③ E. END OF KEYSTONE WALL CROSSES NWLY & 22.0" NELY OF PROP. COR. ANGLE OF POINT AND SOUTH FACE OF WALL CROSSES & 8.7" W. OF ANGLE POINT PROP. COR. S. EDGE OF WALL IS 0.4'S OFF &
- ④ S. EDGE OF CONG. PATH CROSS NWLY & 28.9" NELY OF ANGLE POINT PROP. COR. ANGLE POINT IS 0.12'S OF SETLY OF &
- ⑤ S. EDGE OF CONG. PATH CROSS NWLY & 82.2" SWLY ANGLE POINT PROP. COR. CONG. PATH ANGLE POINT IS 0.04'S OF &
- ⑥ S. EDGE OF CONG. PATH CROSS NWLY & 1.2" ELY OF ANGLE POINT PROP. COR. AND THE CONG. PATH ANGLE POINT IS 0.12'S OF &

EX 5.01" REBAR LS 35142 & 31667 1.2" SLY OF PL. (DETAIL 4" N.T.S.)



- LEGEND**
- ⊕ SUBDIV. CORNER/FOUND
 - ⊕ SUBDIV. CORNER/NOT FOUND
 - ⊙ FOUND CONC. MON. IN CASE
 - FOUND SURFACE MON.
 - EXISTING CAPPED REBAR
 - SET CAPPED REBAR LS #30450
 - SET LINE STAKE



GF GROUP FOUR
 Inc.
 Land Surveying | Civil Engineering
 Land Use Planning | Biological Sciences
 PO BOX 0587 1911 VERNON ROAD STE. 301 LAKE STEVENS WA 98026
 (206)881-1102 - FAX (206)877-5241 - www.gfg4.com

ELEVATION CHANGE

65'

1125"

65/2.01 = 32.31%

ELEVATION CHANGES
 PER CONTIGUOUS LINES
 EX. 2.6 1983 SITE PLAN